

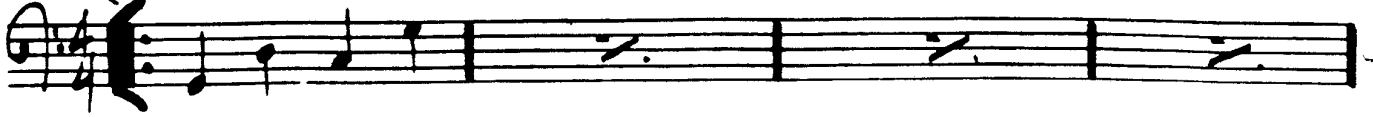
162.

(UP)

# FOUR ON SIX

- WES MONTGOMERY

(BASS)



1.



2. A-7 (11)

D7 #9



G-7



1. C-7 F7 #11

Bb-7 Eb7 #11

A-7 D7 #11

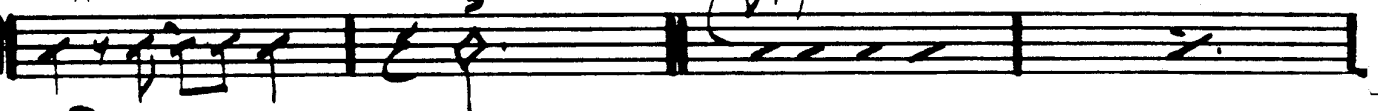
Eb-7 Ab7 #11



2. A-7 (11)

D7 #9

(D7) SOLO BREAK



(SOLOS)

G-7

